

**AUTOMATIC DEPALLETER. MAXIMUM PRODUCTION 25.000 UNITS PER HOUR. MODEL DP-2.**

**PRODUCTS: BOTTLES GLASS, JARS OR CANS.**



### **WORKING (ALL OPTIONS)**

The depalletiser receives full pallets. A platform is positioned automatically on the penultimate layer to maintain it. A second platform takes the top layer to slide on a table holding the products at any time from the bottom. This second platform deposits the layer on the output conveyor. Thereafter, a system removes the intercalated sheets and a cutting device cuts and put out the binding strip. When the pallet is empty, it is automatically conveyed and stores on an empty pallets stocker.

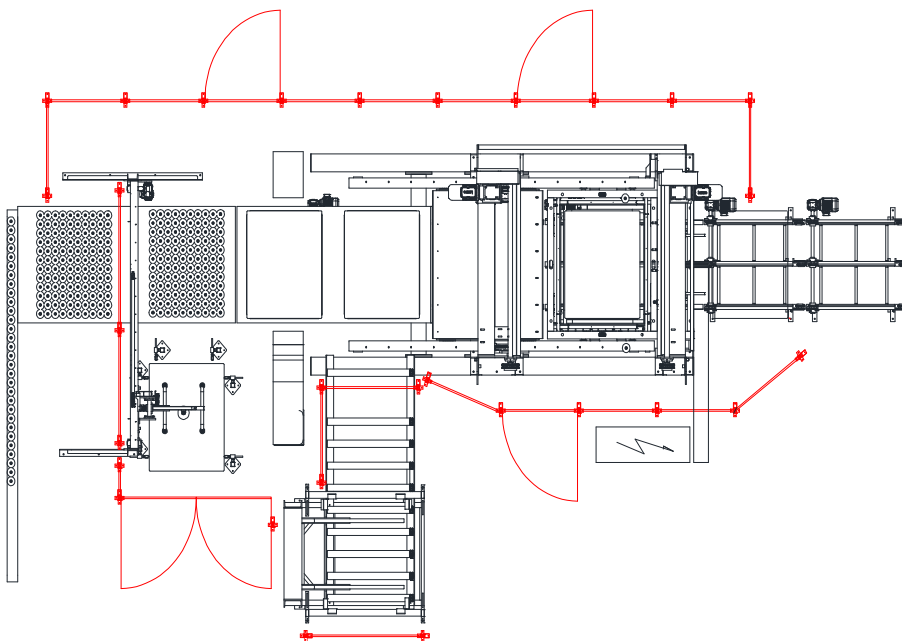
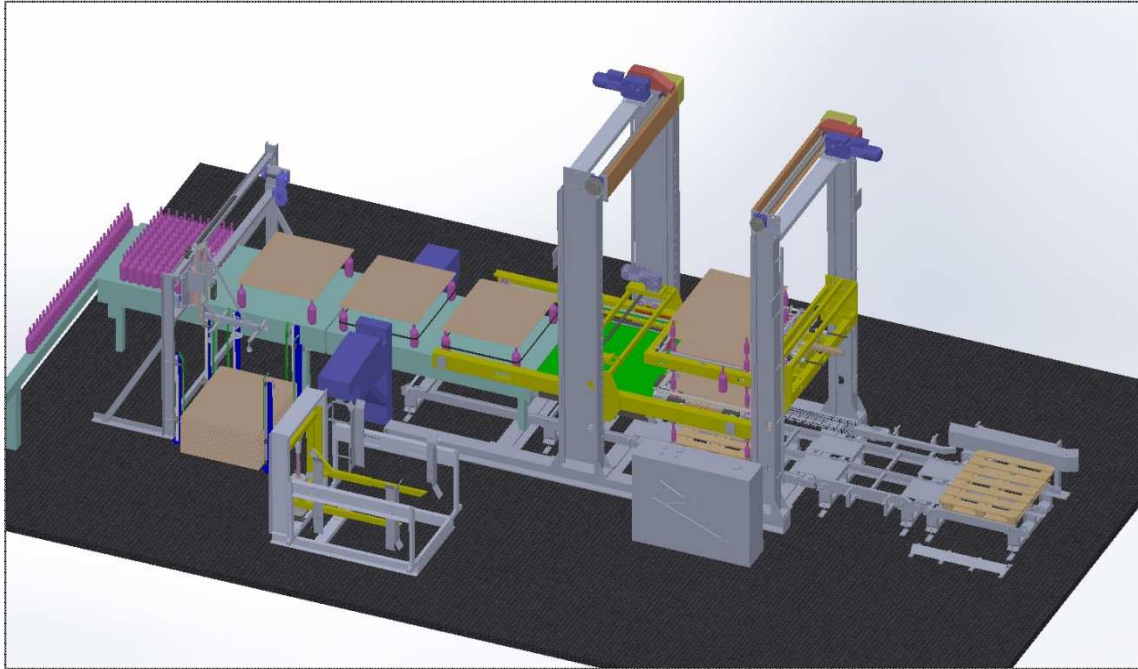
### **TECHNICAL SPECIFICATIONS**

Very robust design. All mechanical, pneumatic, electrical and electronic are high quality, standards and available on the market. New format is easy to programming with our operator/machine interface for the touch screen.

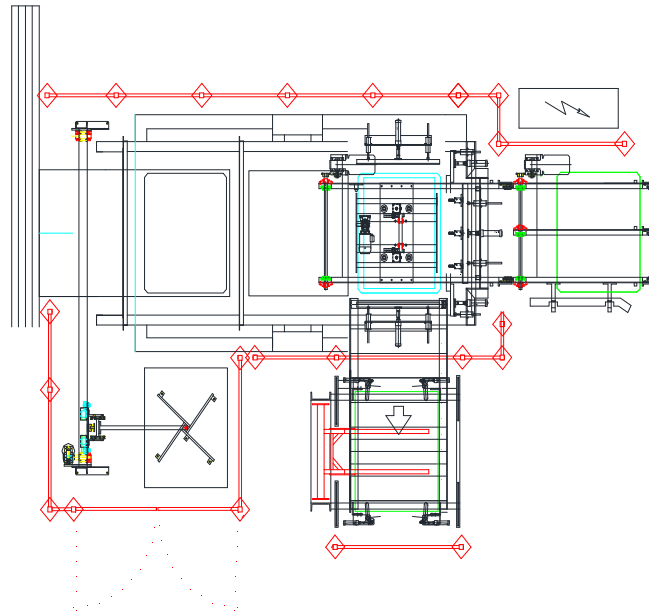
### **OPTIONS AVAILABLE**

Modem intervention service remotely. Conveyor input of full pallets. Automatic removal system spacers and storage element. Automatic Storage element for empty pallet. System of cutting and removing the strapping tape. Output conveyor table.

Example of lay out for depalletizer for 21.000 bottles per hour :



Example of lay out for depalletizer for 15.000 bottles per hour :



|                           |                        |
|---------------------------|------------------------|
| Voltage                   | 220 V ou 380 V         |
| Installed electric power  | 15 KW                  |
| Air consumption per cycle | 30 L per cycle         |
| Air pressure              | 6 atm.                 |
| Maximum production        | 25000 bottles per hour |

